

ROBBINS SBU DIVISION

Metric Version



SLURRY MICROTUNNELING (MTBM)

Microtunneling systems are the optimal choice for smaller diameter, unmanned tunnel boring projects. With these systems, the tunnel boring machine (MTBM) is driven and monitored remotely from the surface and is capable of single pass installations on line and grade per industry standards. The surface-located operation room houses the operator station and drive motor controls for the MTBM and its slurry pumps. Hydraulic power units for the main and intermediate jacking stations are housed separate to the operation room. Robbins has a full staff of field service and support personnel to train and assist as needed to ensure successful project completion.

MTBM APPLICATIONS

- Soft ground, mixed face and rock tunneling projects
- Operates below the water table up to 3 bar pressure
- Machines built to suit DIN Standards as well as common U.S. Standards
- Line and grade sensitive drives and curved drives.
- Drives requiring specific casing types such as RCCP, vitrified clay, polymer-concrete, and steel casing

VERSATILE TUNNELING

Robbins MTBMs bore tunnels with unique and versatile specifications that are determined by customer preference as well as project and technical requirements.

Ranging in diameter from DN 1000 to DN 3000.

Soft ground, mixed face or rock formations.

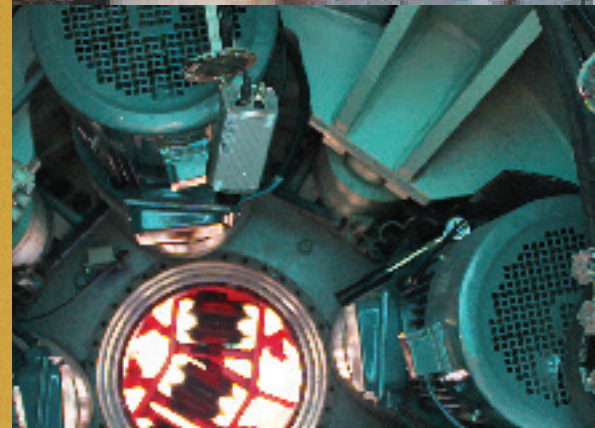
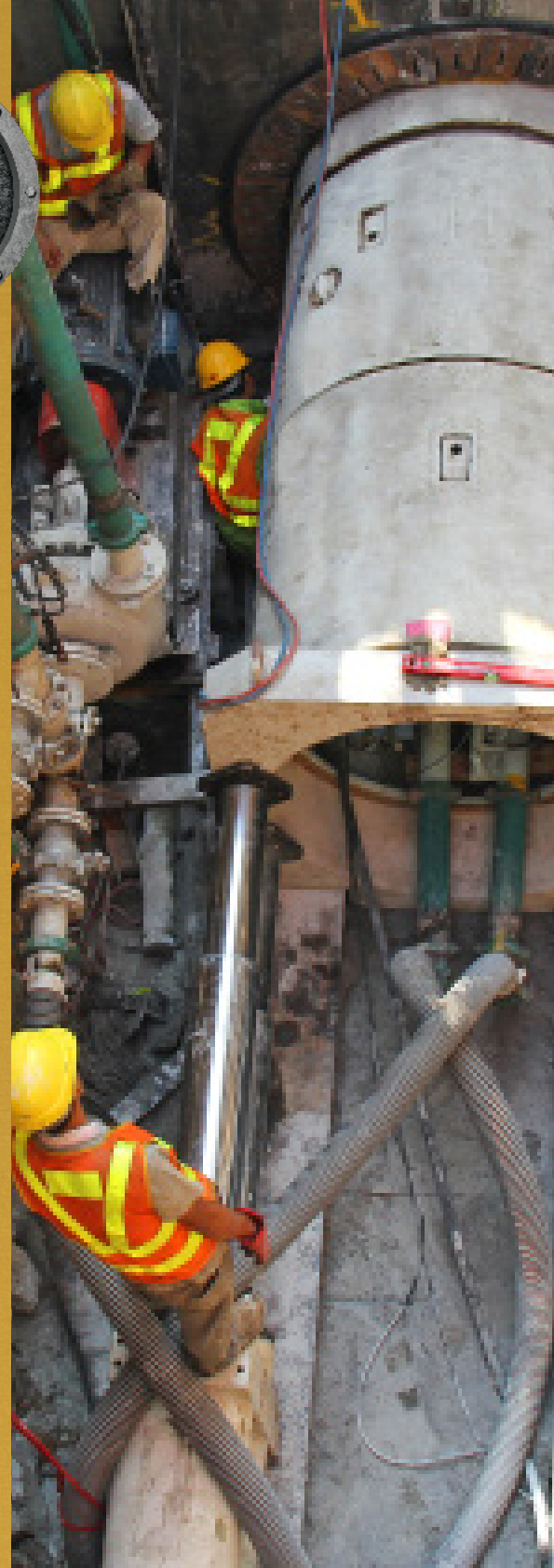
Standard systems can operate with hydrostatic head up to 3 bar.

Boring units of DN 1100 and larger can be manufactured with face access, which allows back-loading cutting tools to be safely changed and inspected from within the MTBM.

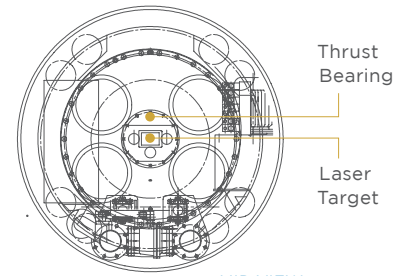
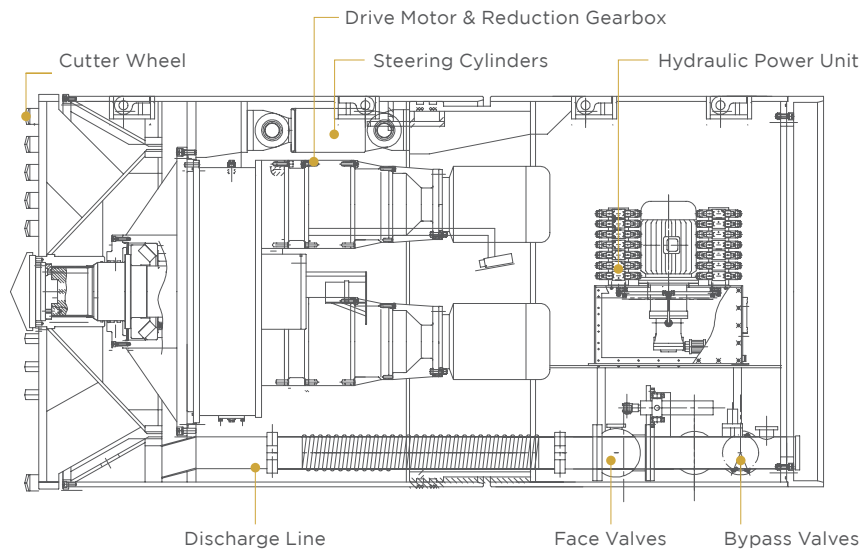
Offers both analog and digital guidance/data logging systems

Custom-sized machines are also available.

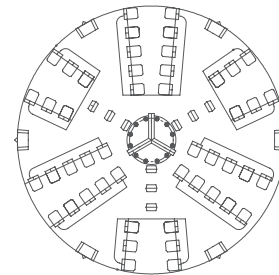
**AVAILABLE FOR
PURCHASE OR LEASE**



SLURRY MICROTUNNELING



MID VIEW



FRONT VIEW

SPECIFICATIONS

DN 1000

Outer Diameter - 1,295 mm
 Pipe o/d - 1,280 mm
 Power - 37 kW
 Torque - 69 kNm
 Speed - 0-5 rpm
 Main Jacks - 2 X 1960 kN

DN 1200

Outer Diameter - 1,505 mm
 Pipe o/d - 1,490 mm
 Power - 45 kW
 Torque - 81 kNm
 Speed - 0-5 rpm
 Main Jacks - 4 X 1470 kN

DN 1500

Outer Diameter - 1,810 mm
 Pipe o/d - 1,780 mm
 Power - 90 kW
 Torque - 208 kNm
 Speed - 0-4 rpm
 Main Jacks - 4 X 1470 kN

DN 1800

Outer Diameter - 2,150 mm
 Pipe o/d - 2,120 mm
 Power - 88 kW
 Torque - 420 kNm
 Speed - 0-3 rpm
 Main Jacks - 4 X 1960 kN

DN 2000

Outer Diameter - 2,425 mm
 Pipe o/d - 2,400 mm
 Power - 120 kW
 Torque - 553 kNm
 Speed - 0-3 rpm
 Main Jacks - 4 X 1960 kN

DN 2200

Outer Diameter - 2,725 mm
 Pipe o/d - 2,700 mm
 Power - 120 kW
 Torque - 553 kNm
 Speed - 0-3 rpm
 Main Jacks - 6 X 1960 kN

DN 2400

Outer Diameter - 3,025 mm
 Pipe o/d - 3,000 mm
 Power - 180 kW
 Torque - 859 kNm
 Speed - 0-3 rpm
 Main Jacks - 6 X 1960 kN

DN 2600

Outer Diameter - 3,127 mm
 Pipe o/d - 3,100 mm
 Power - 180 kW
 Torque - 980 kNm
 Speed - 0-3 rpm
 Main Jacks - 6 X 1960 kN

DN 3000

Outer Diameter - 3,625 mm
 Pipe o/d - 3,600 mm
 Power - 222 kW
 Torque - 1,246 kNm
 Speed - 0-3 rpm
 Main Jacks - 8 X 1960 kN